

audison

bit Ten D

| bit

SOFTWARE
UPGRADE



ideato,
progettato,
ingegnerizzato
in Italia

WHAT ARE THE STEPS TO UPGRADE THE PC SOFTWARE?

1. UNINSTALLING the bit Ten PC Software (if a PC SW version lower than v. 1.2.1 is already installed).

Procedure 1

To uninstall the **bit Ten D** PC software you can use the link listed on the following menu:

Start / All Programs / bit Ten D / uninstall.



Procedure 2

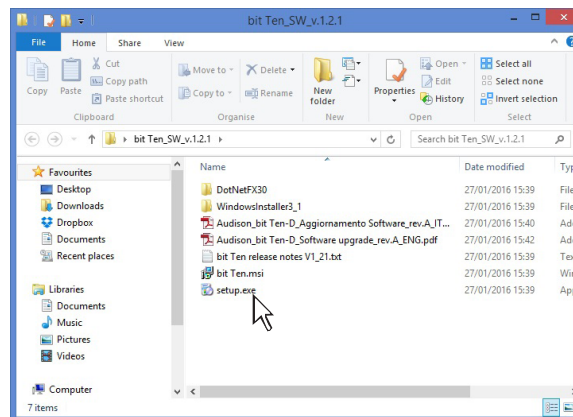
To uninstall the **bit Ten D** PC software you can also follow the standard procedure: **Start / Control Panel / Applications Installation / bit Ten D / uninstall**



2. INSTALLING the bit Ten PC Software v. 1.2.1

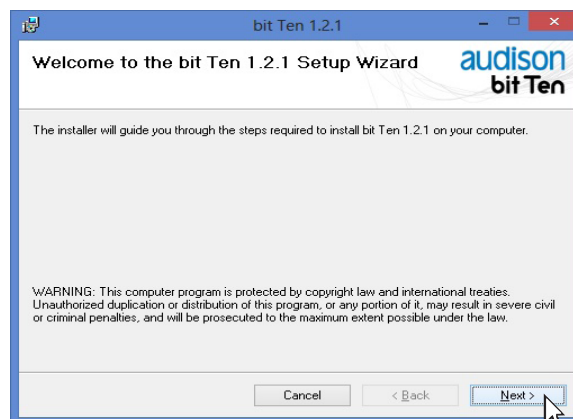
1. Windows XP, Windows Vista, Windows 7, Windows 8, 8.1, Windows 10:

Open the folder "**bit Ten_SW_v.1.2.1**". Locate the "**setup**" icon and double click on it;



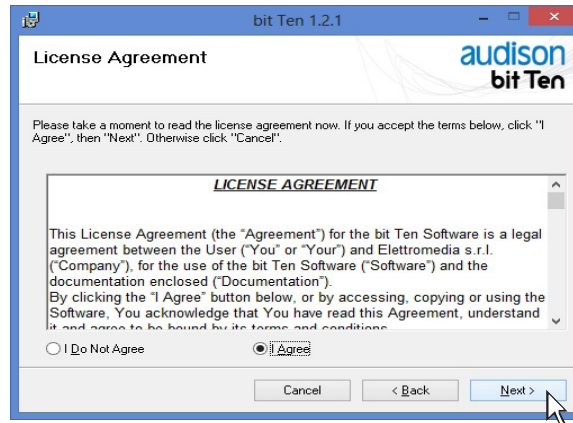
2. Windows XP, Windows Vista, Windows 7, Windows 8, 8.1, Windows 10:

Select **NEXT** to continue with the installation or **CANCEL** to interrupt it;



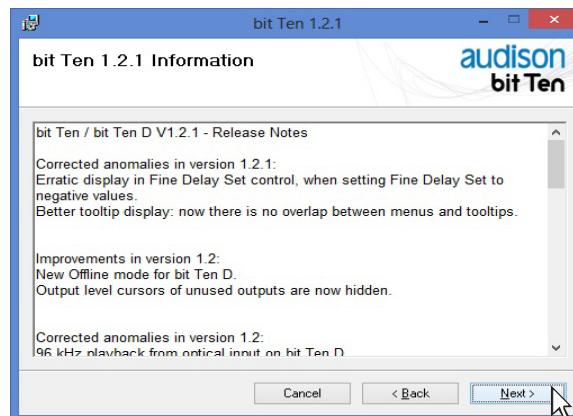
3. Windows XP, Windows Vista, Windows 7, Windows 8, 8.1, Windows 10:

Select **I Agree** and then **NEXT**;



4. Windows XP, Windows Vista, Windows 7, Windows 8, 8.1, Windows 10:

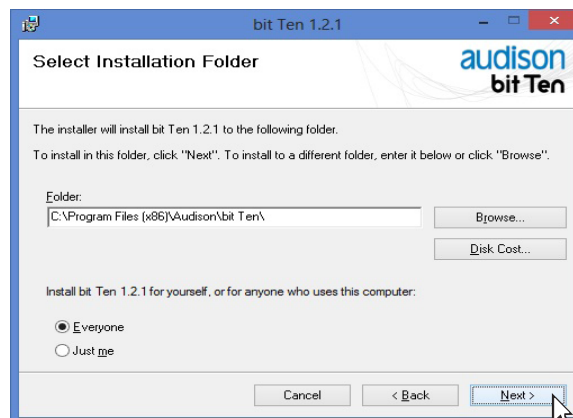
Select **NEXT**;



5. Windows XP, Windows Vista, Windows 7, Windows 8, 8.1, Windows 10:

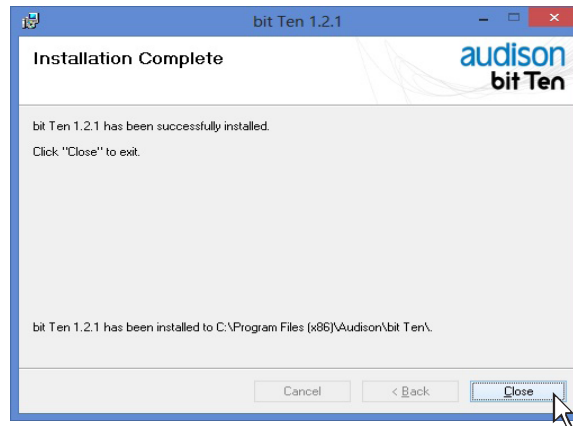
Select:

- **Everyone** if you have system administrator privileges, so that, once installed, the program can be used by anyone who uses that PC;
 - **Just me** if you want that, once installed, the program can only be used by yourself as a single system user.
- Then click **NEXT**.



6. Windows XP, Windows Vista, Windows 7, Windows 8, 8.1, Windows 10:

Complete the installation procedure, then click **CLOSE** to exit the installation;

**3. USB DRIVER INSTALLATION**

1. Turn the **bit Ten D** on;
2. Connect the USB cable to the appropriate port on the **bit Ten D** and to an available USB slot on the PC;

WARNING: When connecting a PC laptop via USB cable to the **bit Ten D** while the device is turned on, the laptop has to work with its own battery and stay disconnected from the mains adapter (external power supply). Once the connection between the PC laptop and the **bit Ten D** is established, you can immediately connect the computer, if necessary, to the mains adapter.

3. Windows XP, Windows Vista, Windows 7, Windows 8, 8.1, Windows 10:

the PC will recognize the **bit Ten D** interface and will automatically install the driver;



4. The peripheral device has been installed correctly and is ready for use.

Remark: The **bit Ten D** uses HID drivers already integrated in Windows. For this reason, they are not included on the CD and will always install automatically.

www.audison.eu

audison
ISTINTO
INNOVATIVO

PART OF ELETTRONEDIA
62018 Potenza Picena (MC) Italy
T +39 0733 870 870 - F +39 0733 870 880
www.elettromedia.it