

audison

| bit

bit Nove SOFTWARE UPDATE

V. 1.0.1.8



ideato,
progettato,
ingegnerizzato
in Italia

Highlights

WHY DO YOU NEED TO UPDATE YOUR bit Nove?

WHO: users with bit Nove where Software ver. **1.0.1.6** or lower is installed.

WHY: with this software update, visual usability equalization feature improvement and better accuracy of parametric poles have been introduced a minor bug has been fixed.

RELEASE NOTES:

PC SW v. 1.0.1.8:

- Optimized input front signal reconstruction in case of 3-way full active.

PC SW v.1.0.1.6:

- Parametric Equalizer (PEQ) improved for a better accuracy and usability during the sound tuning process by:

a) adding a text box that shows each pole settings every time you select one:

G = Gain [dB]

Fc = Center frequency [Hz]

Bw = Bandwidth [lower freq., upper freq. - Hz]

b) improving the **Bw** (bandwidth) and **Fc** (center frequency) resolutions for each pole and the minimum distance (gap in frequency) between two or more adjacent poles.

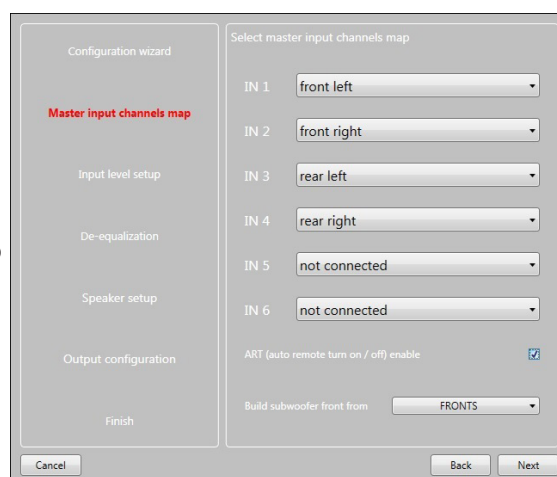
c) extending the keyboard layout compatibility in order to support the EQ adjustment commands through the combination of "**CTRL**" plus the **arrows** (left and right, up and down) or the "**+**" "**-**" symbols.



The SW allows to better centre the pole, adjust its bandwidth to get a very selective correction and even position close poles without limitations for an expert sound tuning, delivering fine results

- Additional "ART" entry (Automatic remote turn on/off) selectable during the step of Input wizard configuration.

Remark: ART function is enabled by default and it works with SPEAKER inputs only. In case the PRE inputs are used, ART function must to be disabled in order to use the Remote input wire.



- Behaviour of "**Filter model**" entry corrected on the crossover section that was triggering to "Linkwitz" alignment every time the "**Filter type**" was changed.

WHAT ARE THE SW/FW COMPATIBILITIES?

WARNING: This SW v. **1.0.1.8** can be used with FW v. **1.0.2.1** or higher.



WARNING: EQ settings of setup files created with previous PC SW versions (lower than v.1.0.1.6) may have an altered curve visualization or settings. We suggest to create a new setup file, by using the new SW v.1.0.1.6, to benefit from the new Equalization characteristics.



WHAT ARE THE STEPS TO UPDATE YOUR bit Nove?

First of all check if the PC SW version installed in your PC is already updated to v. **1.0.1.8**.

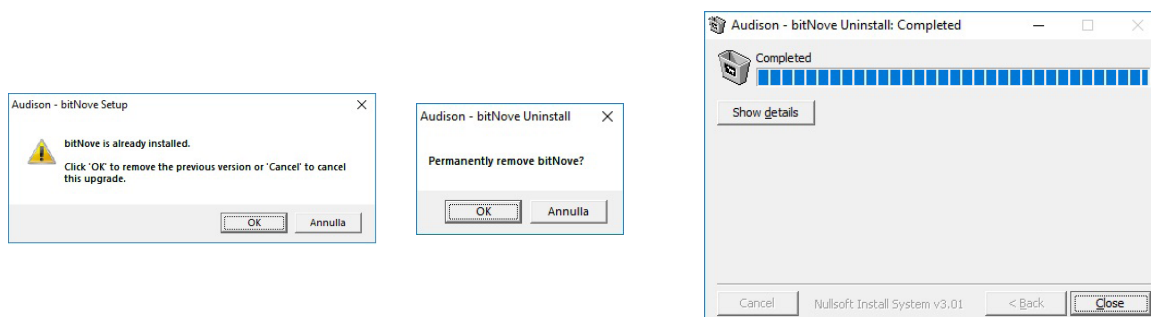
When launching the PC SW in **Offline** mode (no device connected), it is possible to check the PC SW version from the menu: **Help -> about**



If the PC SW is not updated to v. **1.0.1.8** or greater, follow the instructions for the **SW update** described in sections 1-2..

1. UNINSTALLING the bit Nove PC Software (currently installed on the PC).

Every time a new SW update for bit Nove is run, if an older SW version is already installed in the PC, the new SW will automatically remove the old SW at the beginning of the installation process. The following screenshots will be displayed.



Only in case the automatic uninstallation of the software doesn't work, one of the following manual procedures can be used.

MANUAL PROCEDURES :

Procedure 1

To uninstall bit Nove PC software you can use the link provided in the menu:

Start / All programs / bit Nove/ uninstall

Procedure 2

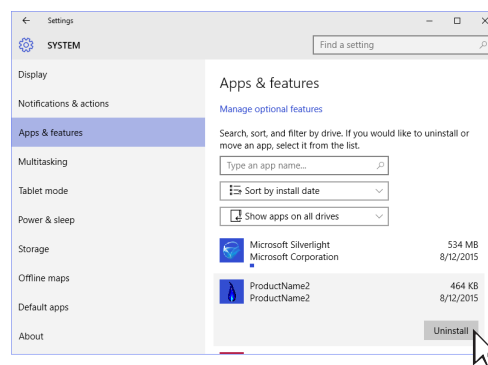
To uninstall bit Nove PC software, you can also use the standard procedure:

Start / Control Panel / Uninstall or change a program / bit Nove / remove

Procedure 3

To uninstall bit Nove PC software (Windows 10), you can uninstall the bit Nove SW following the path below:

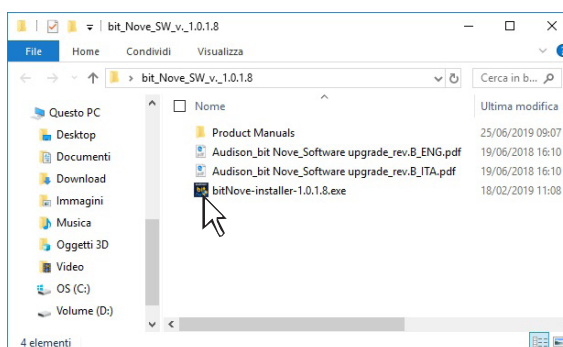
Start / Settings / System / Apps & features



2. INSTALLING the bit Nove PC Software v.1.0.1.8

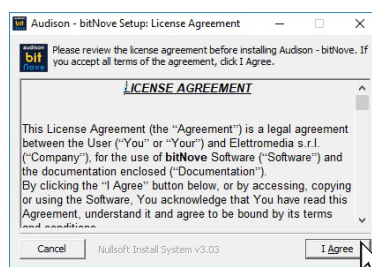
1) Windows XP, Windows Vista, Windows 7, Windows 8, 8.1, Windows 10:

Open the folder "bit_Nove_SW_v_1.0.1.6". Locate the "**bitNove-installer-1_0_1_8.exe**" icon and double click on it:



2) Windows XP, Windows Vista, Windows 7, Windows 8, 8.1, Windows 10:

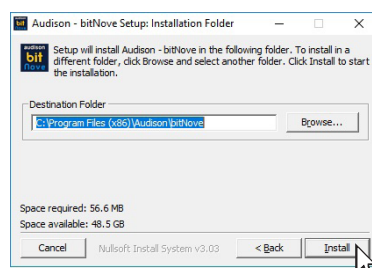
Read the **LICENSE AGREEMENT** before proceeding with the installation. Select **I AGREE** to accept the terms and continue with the installation or **CANCEL** to interrupt it ;



3) Windows XP, Windows Vista, Windows 7, Windows 8, 8.1, Windows 10:

Select

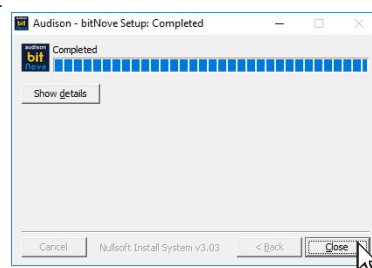
- **INSTALL** to proceed with the installation;
- **BACK** if you wish to return to the previous page;
- **CANCEL** to exit the installation



4) Windows XP, Windows Vista, Windows 7, Windows 8, 8.1, Windows 10:

Select

- **CLOSE** to complete the installation.





All specifications subject to change without notice_19.A

audison.com

audison
ISTINTO
INNOVATIVO

PART OF ELETTRONEDIA
62018 Potenza Picena (MC) Italy
T +39 0733 870 870 - F +39 0733 870 880
elettromedia.com