

audison

| prima

AP8.9 bit
AP5.9 bit
AP4.9 bit
SOFTWARE
UPGRADE

V. 2.2.4



ideato,
progettato,
ingegnerizzato
in Italia

Highlights

WHO NEEDS TO UPDATE THE PC SOFTWARE AND WHY?

WHO: - Users with AP8.9 bit where PC Software ver. **1.0.X.Y** is installed.
- Users with AP8.9 bit AP5.9 bit or AP4.9 bit where a PC Software version lower than v. **2.2.4** is installed.

WHY: This PC Software update implements new functions.

RELEASE NOTES v.2.2.4.2:

- Added "Musical Setup" mode on "I/O Configuration Wizard" to boost the input sensitivity and therefore gain headroom when musical tracks from the source are played.
- Added "Sensitivity..." white button on the status bar (bottom right) to quickly access the sensitivity settings of the input channels.
- Minor bug Fix.

MUSICAL SETUP Vs. 0dB REFERENCE SETUP

INSIGHTS on AUTOMATIC SENSITIVITY ADJUSTMENT on Prima SW

A correct MASTER input level setup is essential to achieve a great result while avoiding input clipping from the source, especially in case of OEM head units, where the nonlinear region often starts at Medium to Mid-High radio's volume level due to the lack of power from embedded audio chipsets.

Our Prima SW, as well as some of our Audison bit processors, provides the automatic adjustment of input channels sensitivity in 3 steps only:

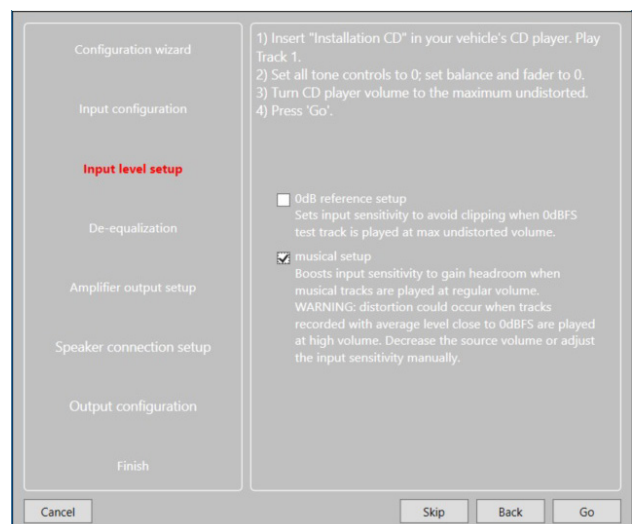
1. Turn up the volume until the distorting point is reached;
2. Play the test track 1, that is a 0dBFS sine sweep;
3. Click on Go and the SW will adjust the sensitivity automatically!

With this new SW, at this point you can choose between two setups, called "**Musical**" and "**0dB reference**".

The traditional "**0dB reference**" setup adjusts the input sensitivity levels in order to avoid clipping at the radio's maximum undistorted volume, even when the maximum digital amplitude level (0dBFS) is reached by the musical track during its playback (peaks). Therefore, this setup allows the best undistorted dynamic range and it is advisable for SQ applications.

The new "**Musical**" setup boosts the input sensitivity levels in order to gain a suitable headroom for improving the perception of loudness.

In fact good musical tracks, typically characterized by an high dynamic range are also mastered with an average digital level sufficiently below the 0dBFS (i.e. upper limit), depending on music genre and style, and sometimes never reach the 0dBFS even during the most powerful dynamic peaks. As a result, these tracks could be perceived as poor in loudness and that's why the musical setup has been introduced. Therefore, this setup allows the user to reach higher music loudness while keeping a lower volume from the head unit and it is advisable for enhancing the perception of system performance.



Remark 1: the **input sensitivity levels** can be always adjusted after the wizard is completed. A quick button on the status bar (bottom right) has been introduced with this new SW.



Remark 2: for determining the **maximum undistorted volume**, the best way is always measuring the head unit audio characteristics through an instrument like our Audison bit Tune by using the O-scope and the THD distortion meter tools. Alternatively, the head unit's volume should be prudentially set in the range 50% to 75% of full scale.

WHAT ARE THE NEW PC SW ver 2.2.4.2 COMPATIBILITIES?

WARNING: PC SW version **2.2.4.2** is exclusively compatible with FW version **2.2.1.3** and vice versa.



So, once the present PC SW update has been completed, you'll have to update the FW of your AP bit device.

IMPORTANT REMARKS:

- ▶ It is not possible to install two different PC SW versions in the same PC
- ▶ It is not possible to use the PC SW ver. **2.2.4.X** on AP 8.9 bit with FW ver. **1.0.X.Y**

The PC SW will display the following alert message:



In that case it is possible:

- a) To go on with the FW ver. **2.2.1.3** update (ex. new AP8.9 bit)
 - b) To use the PC SW ver. **1.0.X.Y** (ex. AP8.9 bit previously installed and setup) to connect the AP bit device; then, save the Setup file (.aps) as described in the following section, point **1. "SAVING SETUP FILE (optional)"**.
- ▶ It is possible to use the PC SW ver. **2.2.4.X**, both in **Offline** mode (no device connected) and in **Online** mode (ex. AP8.9bit with FW 2.2.X.Y and connected), to read, modify and save the Setup files (.aps) previously created with PC SW ver. **1.0.X.Y**.

The PC SW will display the following alert message:



If you save, the Setup file (.aps) will be automatically converted to work exclusively with the PC SW versions **2.2.4.X**.

WHAT ARE THE STEPS TO UPGRADE THE PC SOFTWARE?

1. SAVING SETUP FILE (optional)

If your product is already installed and set up, remember to save the Setup file (.aps) using a compatible PC SW version.

WARNING: More specifically, if you want to update an **AP8.9 bit**, where SW/FW **ver. 1.0.X.Y** has been previously installed and configured, you need to:



- Save the Setup file (.aps) using exclusively the PC SW ver. 1.0.X.Y;
- Now you can perform the present PC SW and FW ver. 2.2.X.Y update;
- Once the update has been completed, open the PC SW, load the previously saved Setup file (.aps), then save the Setup file again to convert it automatically.

Remark: it won't be possible to use that Setup file anymore with PC SW versions 1.0.X.Y.

If your AP bit product is new, got to step 2.

2. UNINSTALLING the AP bit PC Software (currently installed on the PC).

Procedure 1

To uninstall AP bit PC software you can use the link in the menu:

Start / All programs / AP bit / uninstall



Procedure 2

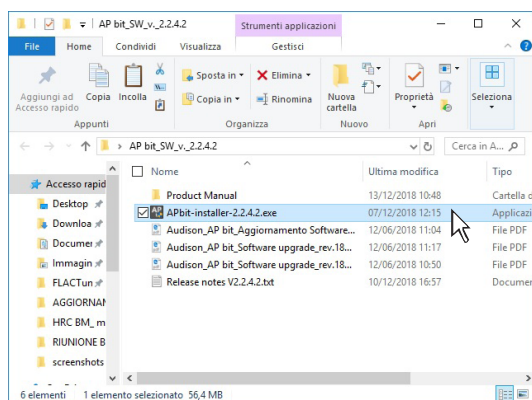
To uninstall AP bit PC software, you can also use the standard procedure:

Start / Control Panel / Uninstall or change a program / AP bit / remove.

3. INSTALLING the AP bit PC Software v. 2.2.4.X

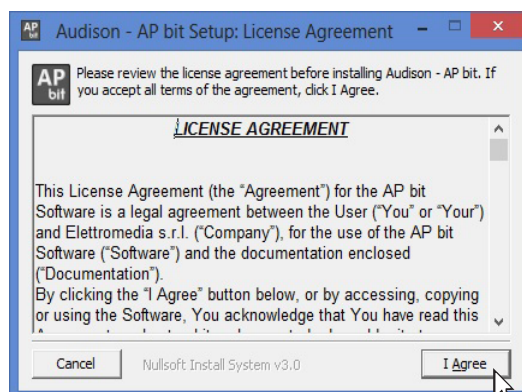
1) Windows XP, Windows Vista, Windows 7, Windows 8, 8.1, Windows 10:

Open the folder "AP bit SW_v. 2.2.4". Locate the "APbit-installer" icon and double click on it:

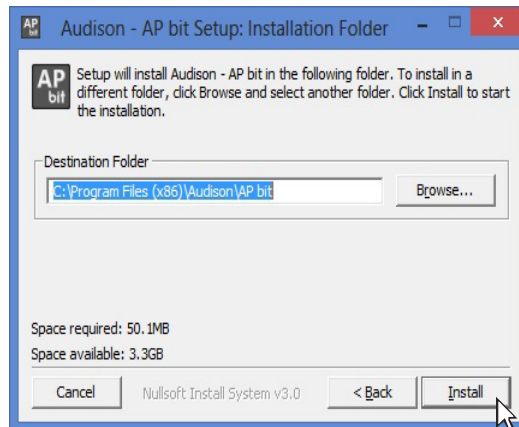


2) Windows XP, Windows Vista, Windows 7, Windows 8, 8.1, Windows 10:

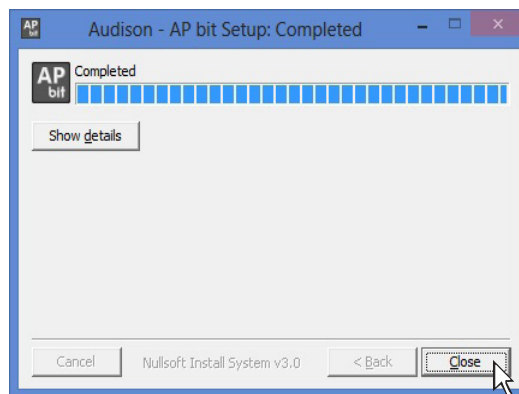
Read the **LICENSE AGREEMENT** before proceeding with the installation. Select **NEXT** to accept the terms and continue with the installation or **CANCEL** to interrupt it;



- 3) **Windows XP, Windows Vista, Windows 7, Windows 8, 8.1, Windows 10:** Select:
- **INSTALL** to proceed with the installation;
 - **BACK** if you wish to return to the previous page;
 - **CANCEL** to exit installation



- 4) **Windows XP, Windows Vista, Windows 7, Windows 8, 8.1, Windows 10:** Select **CLOSE** to complete the installation.





All specifications subject to change without notice

audison.com

audison
ISTINTO
INNOVATIVO

PART OF ELETTRONEDIA
62018 Potenza Picena (MC) Italy
T +39 0733 870 870 - F +39 0733 870 880
elettromedia.com